

From: Laura Behrmann <lgbeyrman@yahoo.com>
Sent: Tuesday, November 17, 2020 9:33 AM
To: Matthew Murphy; Tom O'Hern
Subject: Fw: Full facial Temperature scanners with mask alert
Attachments: Temperature Kiosk Full Brochure.pdf; Facebook_e2d71b67-30be-447e-a3f0-7abd274bdec8.png; LinkedIn_78b8e368-d0ac-4fe1-b6c7-5ed777679347.png; Instagram_d1c5e070-ec67-4292-a48a-2a0d54f46d8a.png; Twitter_022a7c92-0b81-4b90-b2aa-c3241fe54ba1.png; Youtube_f35a526a-faa3-48c1-8b8c-491ea674a713.png; Soundcloud_16cbfc37-599b-4dc0-9ccc-2ee30c163b65.png; RSS_75b6f13a-a2f7-4518-9b89-3bdf657c5991.png; Banner_New_dafeed38-fecd-4700-aa2d-bea245ccd26d.JPG

Can we discuss this at some point?

----- Forwarded Message -----

From: Jennifer Crandall <jcrandall@tomorrowsoffice.com>
To: lgbeyrman@yahoo.com <lgbeyrman@yahoo.com>; Dr. Matthew Murphy <mmurphy@ramsey.k12.nj.us>; Tom O'Hern <tohern@ramsey.k12.nj.us>
Sent: Friday, September 25, 2020, 10:04:55 AM EDT
Subject: Full facial Temperature scanners with mask alert

Hi Dr Murphy, Tom and Laura,

I wanted to follow up as I know you had expressed interest in the past for these temperature read kiosks.

These devices store 30,000 end users data and multiple sites can be managed from one central location. You will have the stored information to back up all that enter locations and the temperature read takes seconds.

We have these in so many schools in both NY and NJ and it is a confirmation that all entered your schools did so with no temperature. This provides the insurance needed if god forbid someone comes in that is sick and exposes others within one of your schools. We can provide references for not only the device but our installation, implementation and service for the units.

This is a full head pixelated temperature read with mask alert, so there is no chance of receiving an incorrect temperature read.

The reason we chose this particular company to partner with is because they have been providing these devices for over 10 years and were considered a leader in this technology provide full service and replacement warranty.

So many fly by night pop up companies came up with devices after Covid and there is no recourse if they stop working or are defective.

Please let me know if you would like any additional information or a demo.

Thank you,

Jennifer

Jennifer Crandall | Global Account Manager

Email: jcrandall@tomorrowsoffice.com

Mobile: (917) 653-0913

For Copier Support: servicecall@tomorrowsoffice.com
For IT Support: atlanticitsupport@tomorrowsoffice.com



"Obsessed with Excellence"



Atlantic, Tomorrow's Office • 400 Broadacres Drive • Bloomfield • NJ • 07003

The information contained in this message and any attachments, which may be proprietary and/or confidential to Atlantic, Tomorrow's Office, is for the exclusive use of the intended recipient(s). If you are not the intended recipient(s), any interception, use, disclosure, dissemination, distribution or copying is strictly prohibited, and may subject you to criminal and/or civil penalties. If you received this message in error, please immediately notify the sender via email and destroy and/or delete, from your system, all copies of this message and any attachments. The sender shall not be liable for the improper or incomplete transmission of the information contained in this communication nor for any delay in its receipt or damage to your system.

From: Jennifer Crandall <jcrandall@tomorrowsoffice.com>
Sent: Monday, July 27, 2020 11:26 AM
To: Dr. Matthew Murphy <mmurphy@ramsey.k12.nj.us>
Subject: Re: Full facial Temperature scanners with mask alert reduced to \$2600 each

Thank you Dr Murphy!

Sent from my iPhone

On Jul 27, 2020, at 8:01 AM, Dr. Matthew Murphy <mmurphy@ramsey.k12.nj.us> wrote:

This email originated outside the organization. Do not click any links or attachments unless you know the sender.
SENDER: mmurphy@ramsey.k12.nj.us

Hi, Jenn,

Thank you so much.

I am very interested. I will Mr. O'Hern reach out to you.

Matthew



Matthew J. Murphy, Ed. D.

Superintendent, Ramsey Public Schools
25 Franklin Turnpike, Ramsey, NJ 07446

Phone: (201) 785-2300

Email: mmurphy@ramsey.k12.nj.us

Website: www.ramsey.k12.nj.us

Facebook: www.facebook.com/RamseyNJschools/

Twitter: @drmatthewmurphy

IMPORTANT: The contents of this email and any attachments are confidential. They are intended for the named recipient(s) only. If you have received this email by mistake, please notify the sender immediately and do not disclose the contents to anyone or make copies thereof.

On Fri, Jul 17, 2020 at 3:05 PM Jennifer Crandall <jcrandall@tomorrowsoffice.com> wrote:

Good afternoon Dr Murphy,

I hope this email finds you well. I appreciate your consideration of our temperature scanners and want to apologize that it took me a day to provide pricing.

Our scanners have full face temperature read, mask detection with the no mask alert, 30,000 user storage and the ability to integrate with card swipes and add a label printer.

The unit can send the alerts to multiple people through email and text alerts and multiple sites can be managed from one central location (or multiple).

Here is the breakdown in the cost of one Thermal Scanner – I have reduced the price as per our discussion

\$2600 per unit: 9 position facial recognition scanner, 30,000 user data store, mask detection and light alert

\$275 per unit : Installation and setup

\$125 per unit: Shipping

\$ 395 per year: Service, on site support, software updates, repair – if we can not repair we provide loaner if we can not fix we will replace

\$3395 or \$112 on a 3 year lease (\$1 out own at the end)

\$150 is the price for the optional label printer to print the clearance badges (facial, name and clearance) 110 labels per minute – die cut.

These can be put on a low monthly lease

We recommend the full on site service and support however if you want to buy them w/o that is also an option.

They have the replacement warranty for one year with purchase even without service and extended through if you choose the service contract to years 2 and 3.

If you have questions please feel free to reach out,

Jennifer

Jennifer Crandall | Global Account Manager

Email: jcrandall@tomorrowsoffice.com

Mobile: (917) 653-0913

For Copier Support: servicecall@tomorrowsoffice.com

For IT Support: atlanticitsupport@tomorrowsoffice.com





"Obsessed with Excellence"



Atlantic, Tomorrow's Office • 400 Broadacres Drive • Bloomfield • NJ • 07003

The information contained in this message and any attachments, which may be proprietary and/or confidential to Atlantic, Tomorrow's Office, is for the exclusive use of the intended recipient(s). If you are not the intended recipient(s), any interception, use, disclosure, dissemination, distribution or copying is strictly prohibited, and may subject you to criminal and/or civil penalties. If you received this message in error, please immediately notify the sender via email and destroy and/or delete, from your system, all copies of this message and any attachments. The sender shall not be liable for the improper or incomplete transmission of the information contained in this communication nor for any delay in its receipt or damage to your system.

This is a staff email account managed by Ramsey Public Schools. This email and any files transmitted with it are confidential and intended solely for the use of the individual or entity to whom they are addressed. If you have received this email in error please notify the sender.



Display Technology
Specialists



Atlantic



Temperature Measurement Kiosks with Facial Recognition

Industry-leading, automated personnel check-in kiosk.



LD-AITemp-DMKiosk



LD-AITemp-FMKiosk

Non-contact kiosks automatically read body temperature in seconds, with optional facial recognition. These kiosks are designed to prevent virus spread and provide a safe environment for your employees, customers and visitors.

Screen all individuals before entry to public and private premises such as office buildings, factories, manufacturing plants, healthcare settings, shops, supermarkets, hotels, schools and universities.

- ✓ Non-contact, fully automated kiosk
- ✓ Reads temperature in ~ 1 second
- ✓ Set your own acceptable temperature thresholds
- ✓ Integrate with gates, turnstiles and door access
- ✓ On screen message displays temperature reading alongside optional verbal message and LED traffic light system
- ✓ Optional facial recognition to recognise and allow entry to vetted individuals within the facial database
- ✓ Plug and play solution – works standalone out of the box with only power required
- ✓ Access and export your logs to excel
- ✓ 1-year standard warranty



Atlantic
tomorrowsoffice.com

Accurate temperature detection

- ✓ Reads temperature in ~ 1 second
- ✓ Top of the range German manufactured temperature sensor
- ✓ Marginal measurement error of $\pm 0.2^{\circ}\text{C}$ (0.3 metres) from close range, and $\pm 0.5^{\circ}\text{C}/\pm 0.9^{\circ}\text{F}$ from further away
- ✓ The recommended distance for the most accurate readings is 0.5 metres, with 1 metre being the furthest distance where temperature can be read
- ✓ Temperature threshold for abnormal temperatures is easily adapted in the application settings



LD-AITemp-WallDevice



LD-AITemp-DMKiosk

Durable, commercial-grade hardware

- ✓ 8-inch IPS full-view LCD display
- ✓ Commercial-grade, waterproof and dust-proof design which is durable and reliable
- ✓ Built-in speakers provide audio alerts including warnings for abnormal temperatures and to request that users wear a mask
- ✓ Supports various peripheral expansions such as ID card reader, fingerprint reader, two-dimensional code reader etc.

Smart facial recognition

- ✓ Industrial-grade binocular wide dynamic camera, night infrared and LED dual photo flood lamp
- ✓ Face recognition speed is ~ 1 second
- ✓ Database capacity for 30,000 faces
- ✓ Supports recognition and comparison of faces with masks
- ✓ The 1:1 comparison recognition rate is more than 99.7%, the 1:N comparison recognition rate is more than 96.7% at a 0.1% misrecognition rate, and the live detection accuracy rate is 98.3% at a 1% mis rejection rate



LD-AITemp-WallDevice

Mount the device onto an existing surface or select a desk stand, freestanding floor stand or wall mount.



LD-AITemp-DMKiosk



LD-AITemp-WallDevice



LD-AITemp-Device



LD-AITemp-FMKiosk



Turnstile Integration

Integrate the device with turnstile access using our dry relay connection, to allow turnstiles to open to staff and/or visitors that pass the acceptable temperature threshold.



LD-AITemp-Device



Model Name	Product Code	Product No	Product Notes
Temperature Pass Management & Face Recognition Surface Fixed Terminal	LD-AITemp-Device	7091135919162	Kiosk Device Only – On Pole To Be Mounted To Existing Surface
Temperature Pass Management & Face Recognition Wall Terminal	LD-AITemp-WallDevice	7091136435555	Kiosk Device With Wall Mount
Temperature Pass Management & Face Recognition Terminal on a Pedestal	LD-AITemp-FMKiosk	7091135919162-7091132058802	Kiosk Device With Freestanding Floor Mount
Temperature Pass Management & Face Recognition Terminal on a Desk Stand	LD-AITemp-DMKiosk	7091135919162-7091134419595	Kiosk Device With Portable Desktop Stand
Temperature Kiosk Pedestal Floor Mount	LD-AITemp-FloorMount	7091132058802	Freestanding Floor Mount Only
Temperature Kiosk Desktop Stand	LD-AITemp-DeskMount	7091134419595	Desktop Stand Only



Model	Temperature Pass Management Module & Face Recognition Kiosk	
Camera	Resolution	2 million pixels
	Type	Binocular wide dynamic camera
	Aperture	F2.4
	Focusing distance	50-150cm
	White balance	Auto
Screen	Photo flood light	LED and IR dual photo flood light
	Size	8.0 inch IPS LCD screen
	Resolution	800 x 1280
Processor	Touch	Not supported (optional upgrade)
	CPU	RK3288 quad-core (optional upgrades - RK3399 six-core, MSM8953 eight-core)
Interface	Storage	EMMC 8G
	Network module	Ethernet and wireless (WIFI)
	Audio	2.5W/4R speakers
	USB	1 USB OTG, 1 USB HOST standard A port
	Serial communication	1 RS232 serial port
Function	Relay output	1 door open signal output
	Wiegand	One Wiegand 26/34 output, one Wiegand 26/34 input
	Upgrade button	Support Uboot upgrade button
	Wired network	1 RJ45 Ethernet socket
	Card reader	ID/IC card reader
	Face database library	Up to 30,000
	1:N face recognition	Support
	1:1 face comparison	Support
	Stranger detection	Support
	Identify distance configuration	Support
	UI interface configuration	Support
	Upgrade remotely	Support
	Interface	Interfaces include device management and settings configuration, personnel/photo management, access and export of logs.



Infrared Thermal Imaging Module	Deployment method	Support public cloud deployment, privatised deployment, LAN use, standalone use.
	Alerts feature (COMING SOON)	Email notifications with temperature readings.
	Temperature detection	Support – Optional feature which can be disabled if not required.
	Temperature detection distance	1 meter (optimal distance is 0.5 meter)
	Temperature error rate	± 0.5°C, ± 0.9°F
	Temperature measurement range	10°C ~ 42°C, 50 ~ 107.6°F
	Thermal field of view	32° x 32°
General Parameters	Normal temperature confirmation	Support – Optional settings for verbal confirmation message and success light can be configured.
	Abnormal temperature alarm	Support – Temperature threshold can be configured as well as optional settings for verbal warning message and warning light.
	Power	Input: 100-240V Output: 12V (±10%)
	Operating temperature	0°C ~ 60°C, 32°F ~ 140°F
	Storage temperature	-20°C ~ 60°C, -4°F ~ 140°F
	Power consumption	13.5W (max)
	Installation method	4 configurations available – surface, wall mount, desktop stand mount, freestanding pedestal mount
Warranty and Support	Size	H260.18 x W132.88 x D25 (mm)
	Packing list	Kiosk terminal (1), power adapter for your region (1), mount of choice (1)
	Warranty period	1-year standard warranty
	Warranty upgrade	Hot swap-out warranty for lifetime or fixed term
	Technical support	Support via live chat, email and phone available



Monitor logs and facial database from a central backend on your network. You can pull reports based on areas and monitor, configure and control your devices from a central PC.



Peak management (Page 1/1)

Buttons: Refresh, Export

Filters: Date: 2020-04-29, Status: All, Role: All, Type of user: All

Area photo	Role	ID	Body temperature	Face status	Device name	Access device	Creation time
	Joe Joe	Employee	36.5°C	Body temperature is normal	80FCAG00020	Face recognition	2020-04-29 11:11:43
	Joe Joe	Employee	36.5°C	Body temperature is normal	80FCAG00020	Face recognition	2020-04-29 11:11:43
	Joe Joe	Employee	36.5°C	Body temperature is normal	80FCAG00020	Face recognition	2020-04-29 11:11:43

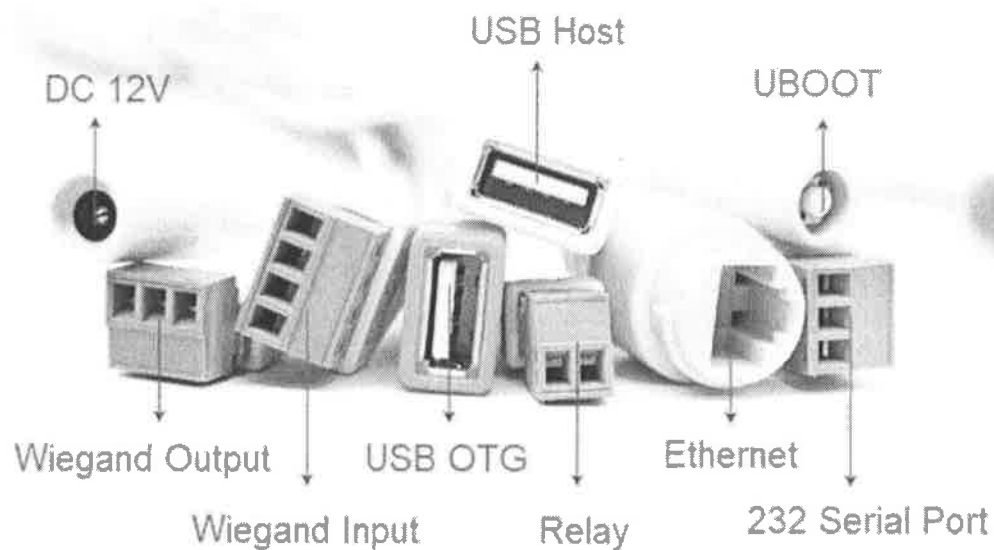
Device management (Device list)

Buttons: Refresh, Export, Settings, Control, More

Filters: Device name: 80FCAG00020

Device name	Access type	Online status	Attention status	Version	IP address	MAC Address	Access device group	Options
80FCAG00020	Enter the gate	Online	Activated	3.1.2.3	192.168.0.10	80FCAG00020	Access device group	

Total: 1/1 Page: 1/1



The interface of each terminal is defined as follows:

Relay	Terminal electrical definition
Pin 1	COM
Pin 1	NO

Wiegand Input	Terminal electrical definition
Pin1	D0_IN
Pin2	D1_IN
Pin3	12V
Pin4	GND

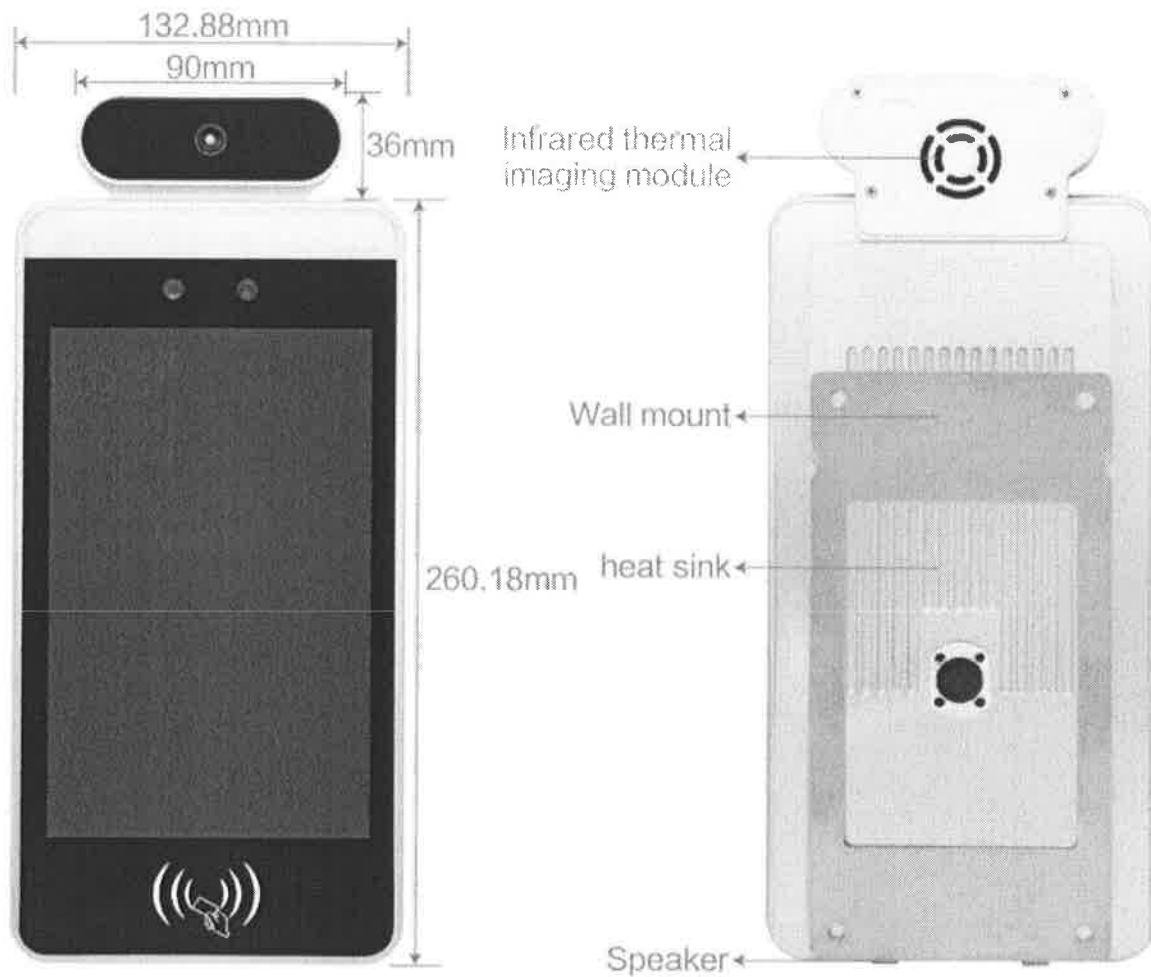


Wiegand Output	Terminal electrical definition
Pin1	D0_OUT
Pin2	D1_OUT
Pin3	GND

232 Serial Port	Terminal electrical definition
Pin1	232_RX1
Pin2	232_TX1
Pin3	GND

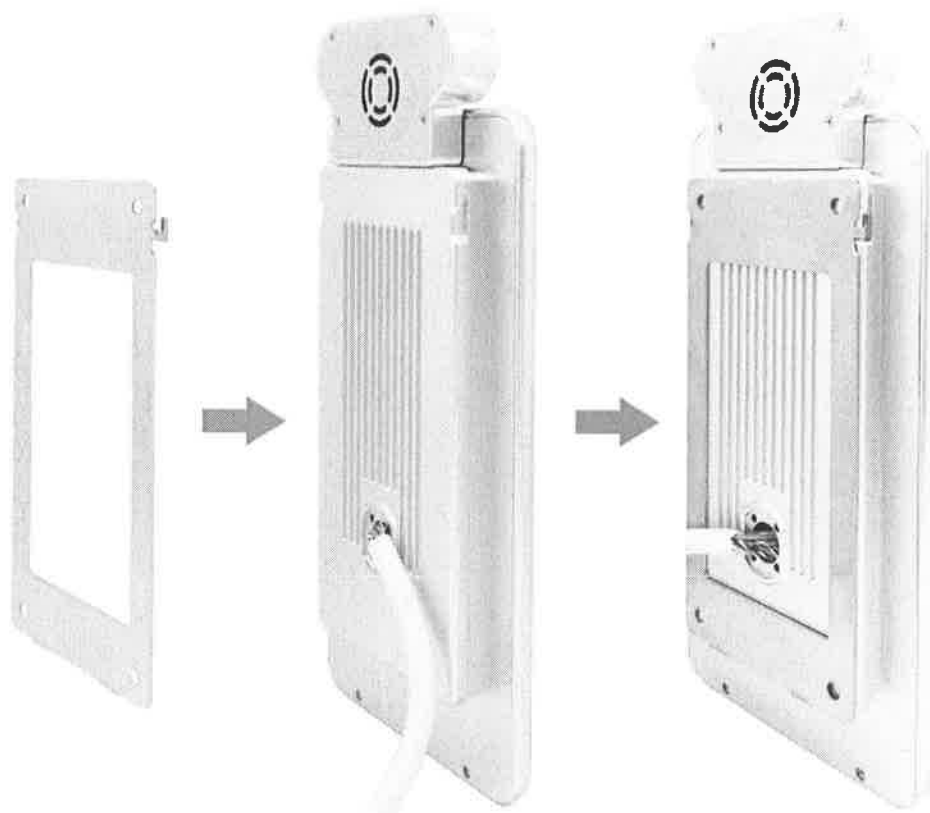


Kiosk Terminal



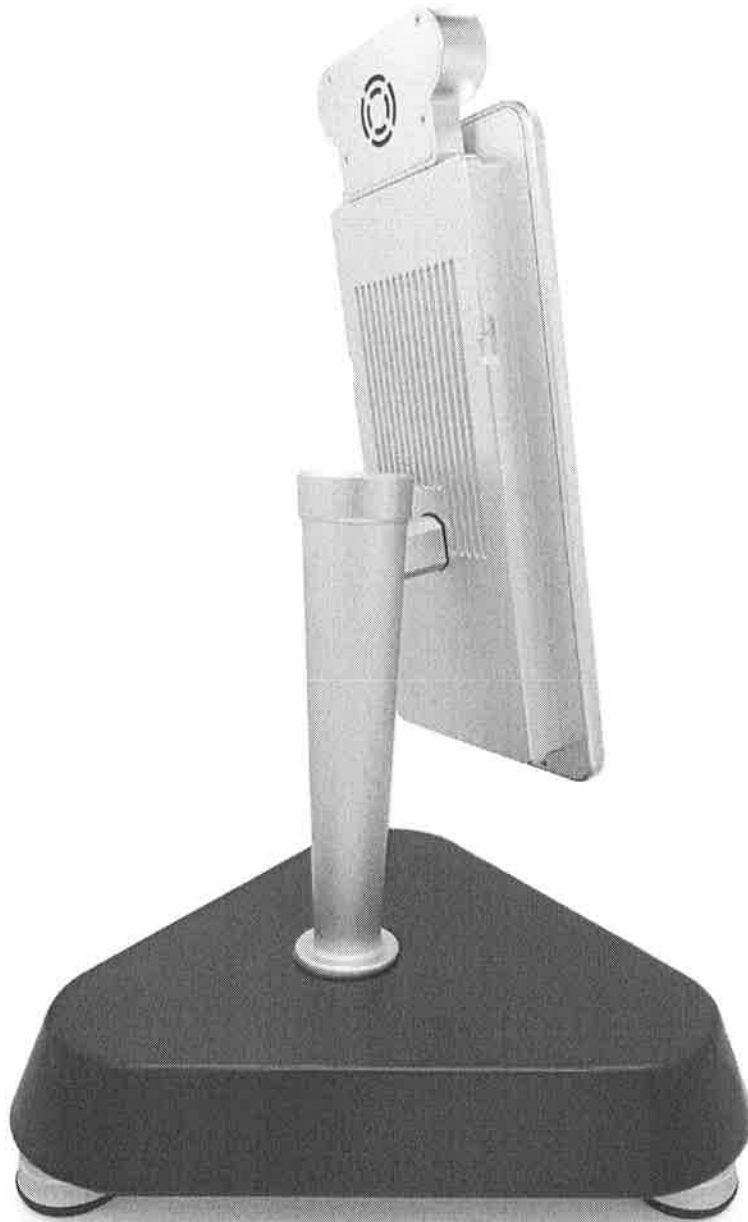


Wall Mount





Desk Mount



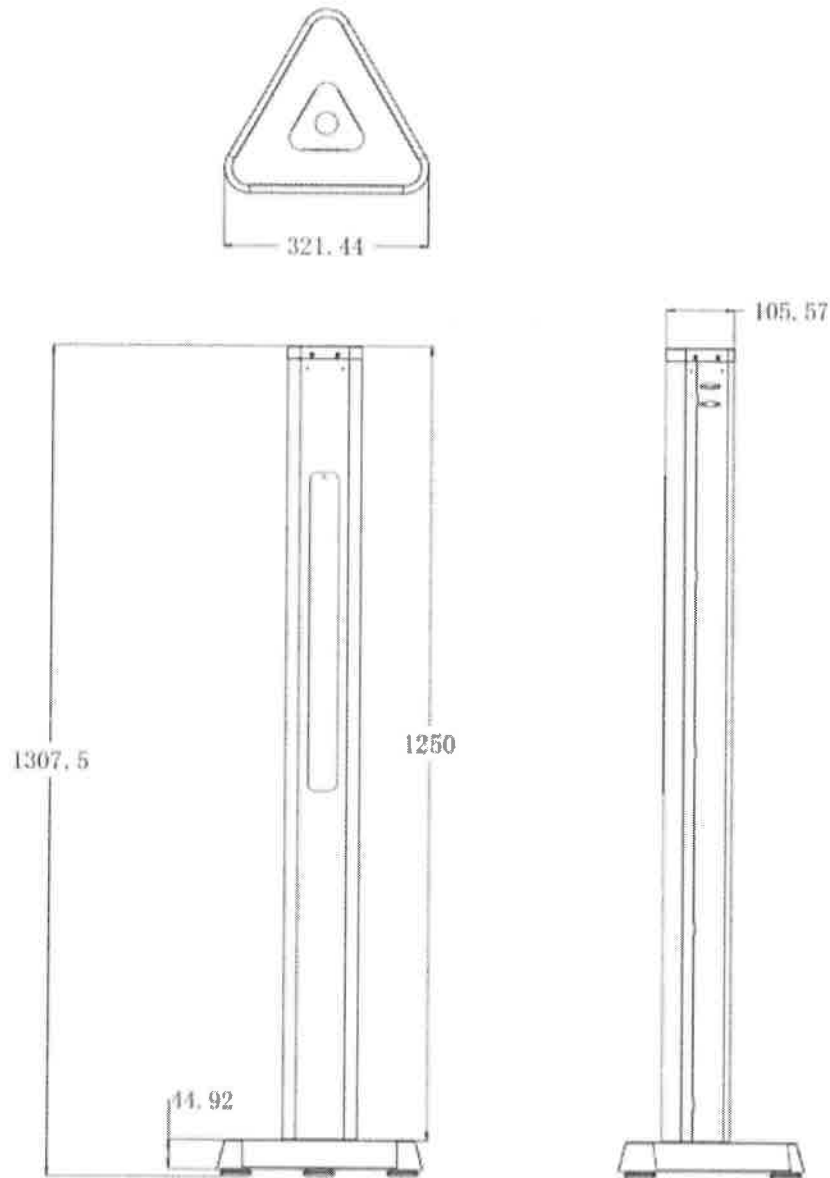


Surface Mount





Freestanding Floor Mount





Display Technology
Specialists



Atlantic

CONTACT US

The L-Display range is created by LamasaTech Ltd.

855.741.6400

jcrandall@tomorrowsoffice.com
tomorrowsoffice.com

